

H55 Rear Oil Discharge Kit, 8262516 and 8262274

Kits 8262516 and 8262274 are for the installation of a rear-discharge oil line, which can be used to dispose of oil. Follow these instructions to place the rear-discharge kit on an H55 fryer. **This kit will only fit on units with a full vat or a spreader on the right (front view).**

1. Remove power from unit.
2. Pull fryer from hood.
3. Remove the lower back.
4. Remove the left most (rear view) plug from the port on the square oil-return manifold. See **figure 1**.
5. Remove the lever and switch assembly from the valve provided in the kit.
6. Install the close nipple and the valve in the opened port on the oil-return manifold. The assembled plumbing should point into the fryer cabinet.

NOTE: Steps 7-8 only necessary on two-vat fryer.

7. Remove the bolts from the oil return manifold except for the two right bolts, which should be loosened. **See figure 1**.
8. Pry slightly (only necessary on two-vat unit) on the left side of the manifold, pulling it away from the cabinet enough to allow the placement of the remaining elbow. See **figure 2**.
9. Install tube adapter and stainless-steel flex line, which should reach to the rear of the cabinet.
10. Install the micro-switch assembly on the new valve. See **figure 4**.
11. Install the front bracket for the oil-disposal rod. See **figure 6**.
12. Assemble the oil disposal rod. Preassembly is necessary due to space constraints in the cabinet. See **figure 5**.
13. Install the lever, attaching it to the valve with the lock tab and nut.
14. Install the tube adapter on the quick disconnect bracket and connect the flex line.
15. Install the bracket for disposal hose quick disconnect on the fryer's rear return manifold. **See figure 3**. *For three and four-vat fryers (front view) an alternate mounting place is shown in **figure 7**.
16. Install the quick-disconnect hardware.
17. Wire the new switch in parallel with the existing oil return switch.
18. Reattach back.

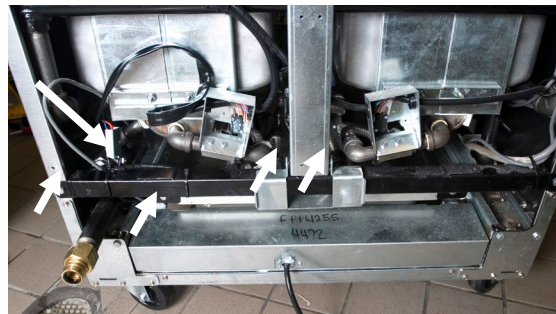


Figure 1: The square oil-return manifold is visible. The port on the left side (marked by down arrow) is removed and the bolts (marked by arrows) supporting the manifold are removed or loosened. The right-side manifold bolts are loosened.



Figure 2 Pry on the loosened manifold as necessary on two-vat units to install the inward pointing elbow.

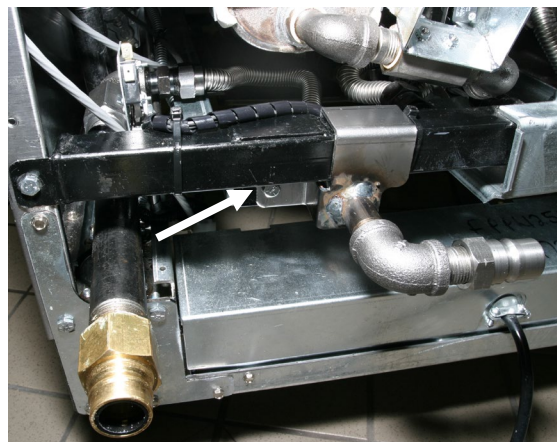


Figure 3*: The assembly is shown in place. The quick disconnect is secured with the existing mounting bolt on the rear return manifold (see arrow).

H55 Rear Oil Discharge Kit, 8262516 and 8262274

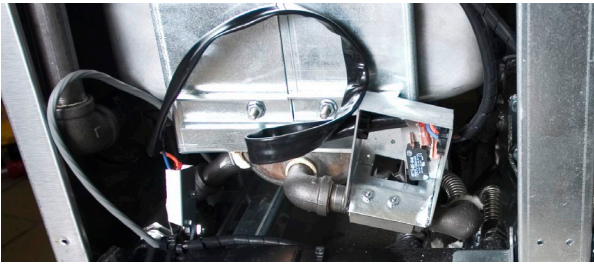


Figure 4 The rear valve switch is shown in place. It is wired in parallel with the existing switch, using piggyback terminals.

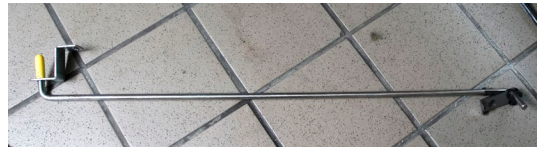


Figure 5 The oil-return activation rod is shown with its hardware attached.

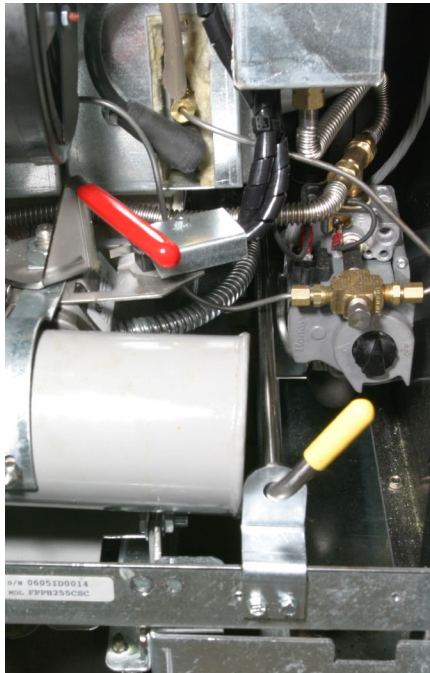


Figure 6: The oil discharge lever bracket attaches to the cross piece in the front of the fryer.



Figure 7: The rear-discharge plumbing is mounted as shown above on three and four-vat fryers.

19. Apply power.
20. Pull discharge rod. The pump should activate (In/OFF) (Out/ON)

H55 Rear Oil Discharge Kit, 8262516 and 8262274

Kit 8262516 (H355 and H455 Fryers)

Part No	Description	Qty
8090657	CLIP, CLEVIS ROD RT.END	1
2025721	ARM, FPP50 OIL RTN DRN VALVE	1
8069092	MOUNT ASSY, MICROSWITCH	1
8072103	SWITCH, MICRO 3VL104D9	1
8090354	SCRW,4-40X3/4 PN SL HD ZP	2
8090237	NUT, 4-40 KEPS HEX W/EXT TH	4
8130022	NPPL,1/2XCLOSE NPT BM	2
8130062	ELBOW,1/2 90DEG BM	1
8100487	QUICK DISCONNECT, 1/2" MALE	1
8236402	BRACKET W/A, H55 OIL DISCARD	1
8101668	ADAPTER, MALE 5/8"O.D. X 1/2"	1
8101669	ADAPTER, 5/8"O.D. X 1/2"FEMALE	1
8101055	FLEXLINE, 5/8" X 11.50" LONG	1
2203473	SUPPORT, H55 OIL DISCARD BRKT	1
8130165	EL,ST 1/2NPT 90DEG BM	1
8196308	H55 RR DSCHRG/DSPSL INSTL KT	1
8090131	SCRW,1/4-20X3/4 HX HD ZP	2
8090823	NUT, NYLOCK,1/4-20	2
WIRO374	WIRE ASSY, H52 FLT SWTCH	1
8069178	HOSE ASSY, SONIC OIL DISPOSE	1
2205000	BRACKET, RF VALVE	1
2126701	HANDLE, FPPH52 RIGHT RF	1

Kit 8262274 (H255 Fryers)

Part No	Description	Qty
8090601	CLIP, CLEVIS ROD LT.END	1
8090657	CLIP, CLEVIS ROD RT.END	1
2025721	ARM, FPP50 OIL RTN DRN VALVE	1
8069092	MOUNT ASSY, MICROSWITCH	1
8072103	SWITCH, MICRO 3VL104D9	1
8090354	SCRW,4-40X3/4 PN SL HD ZP	2
8090237	NUT, 4-40 KEPS HEX W/EXT TH	4
8130022	NPPL,1/2XCLOSE NPT BM	3
8130062	ELBOW,1/2 90DEG BM	2
8236402	BRACKET W/A, H55 OIL DISCARD	1
8101668	ADAPTER, MALE 5/8"O.D. X 1/2"	1
8101669	ADAPTER, 5/8"O.D. X 1/2"FEMALE	1
8101055	FLEXLINE, 5/8" X 11.50" LONG	1
8196308	H55 RR DSCHRG/DSPSL INSTL KT	1
WIRO374	WIRE ASSY, H52 FLT SWTCH	1
8069178	HOSE ASSY, SONIC OIL DISPOSE	1
2205000	BRACKET, RF VALVE	1
2126701	HANDLE, FPPH52 RIGHT RF	1